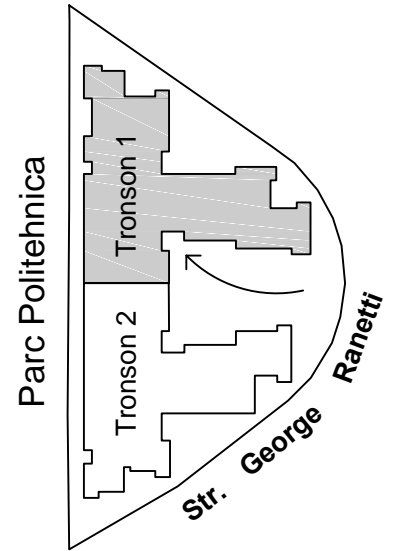
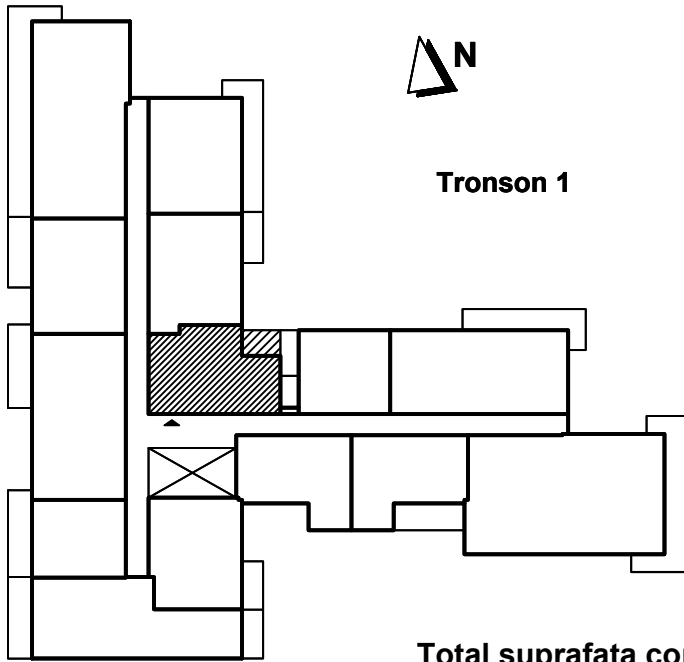
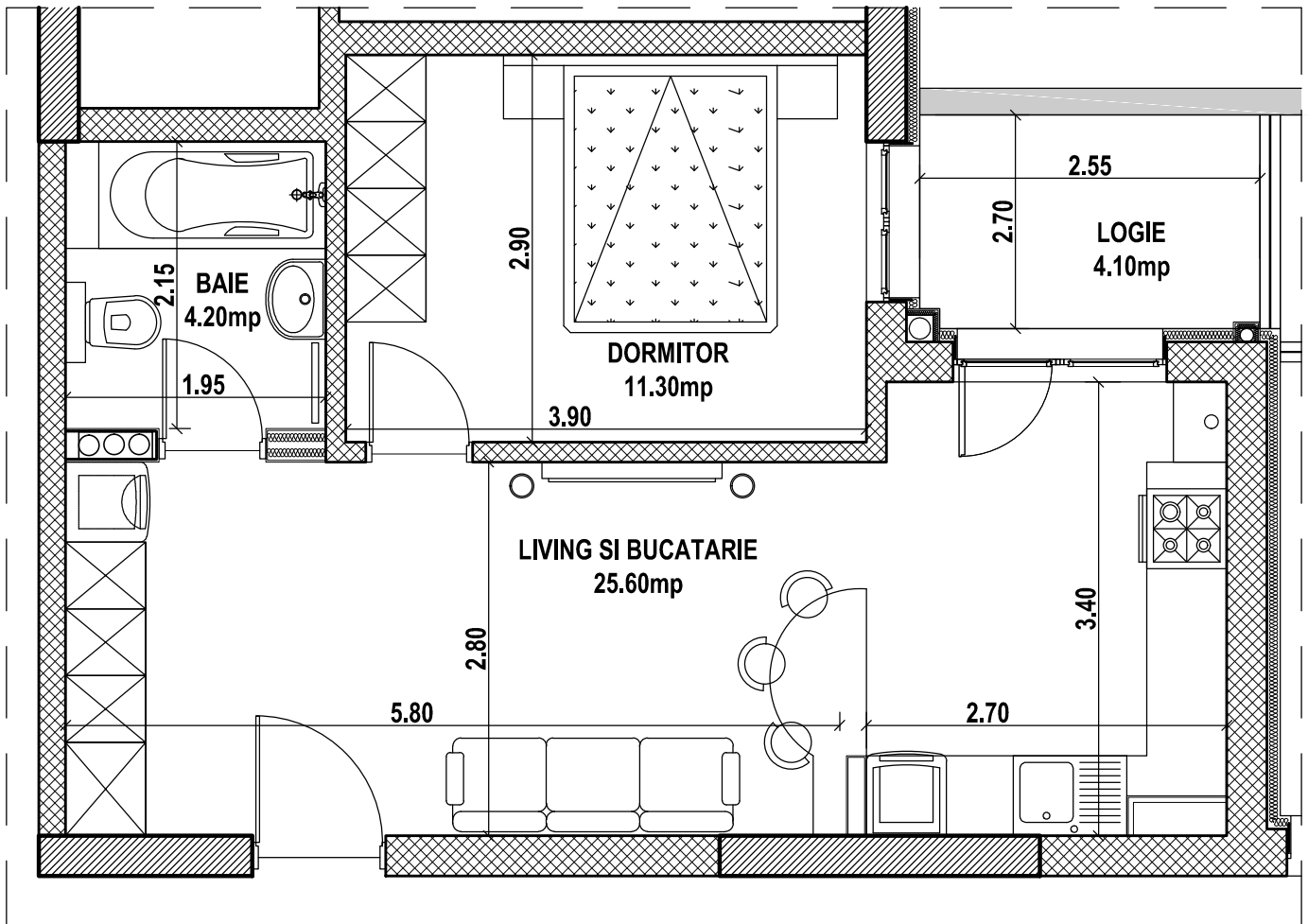


Apartament 2 camere - 1309 / 1509, etaj 3 / 5, tronson 1 Str. George Ranetti, Nr. 2-8, Sector 6



Total suprafata construita apartament = 55.80 mp, din care:
 - suprafata construita logie = 4.70 mp
 Total suprafata utila apartament = 45.20 mp



AP. 1309 /
1509